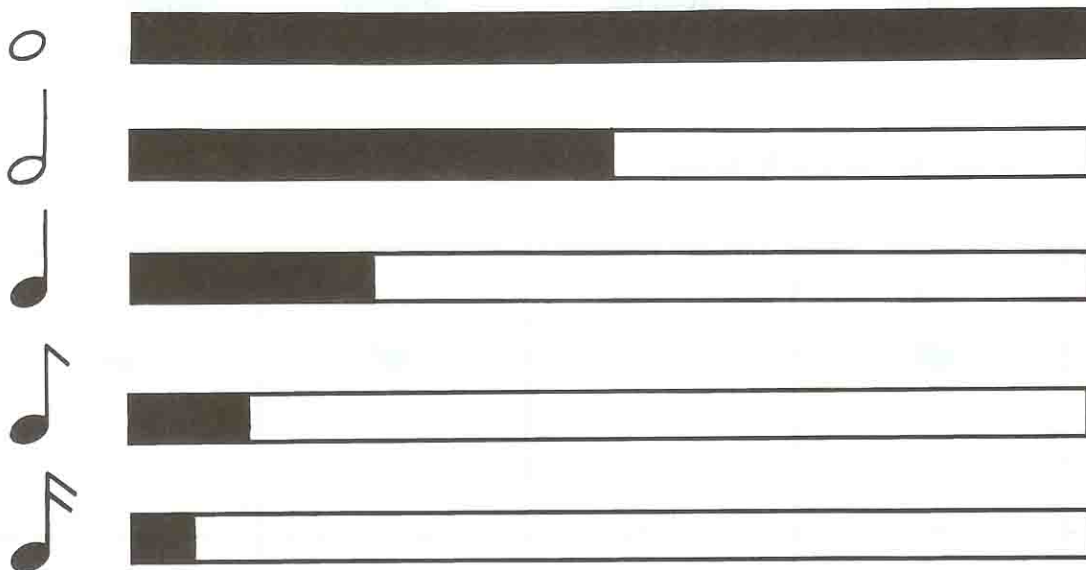


## Note Length

Notes tell *length of tone*. Each time a new part is added the note becomes shorter in length. The whole note is held the longest, and the sixteenth note is held the shortest. Study the bar graph below.

Length of Tone



Circle the note in each block that is held longer.

○ ●	● ○	● ●	○ ●	● ○	○ ●	● ○
-----	-----	-----	-----	-----	-----	-----

○ ○	● ●	● ○	● ●	● ●	● ●	● ○
-----	-----	-----	-----	-----	-----	-----

Circle the note in each block that is held shorter.

● ○	● ●	○ ●	○ ○	○ ●	● ●	● ●
-----	-----	-----	-----	-----	-----	-----